

HOLLOW PISTON-ROD CYLINDERS WITH SPRING CLAMPING AND HYDRAULIC RELEASE WITH THREADED THROUGH HOLE

SERIES 26



Cylinders with mechanical Belleville spring-loaded clamping and hydraulic release. The piston rod hole is threaded to allow the insertion of easily adjustable threaded pins or tie rods. They come in 2 standard models.



APPLICATIONS

Used for their thrust function, these cylinders are ideal when permanent secure clamping is required at a constant force for an unlimited time, without maintaining permanent pressure connection with a central control unit or the like.

They are used to secure dies and matrices, parts on pallets and/or guides, tailstock sleeves, and machine-tool heads.

They can be mounted in series.

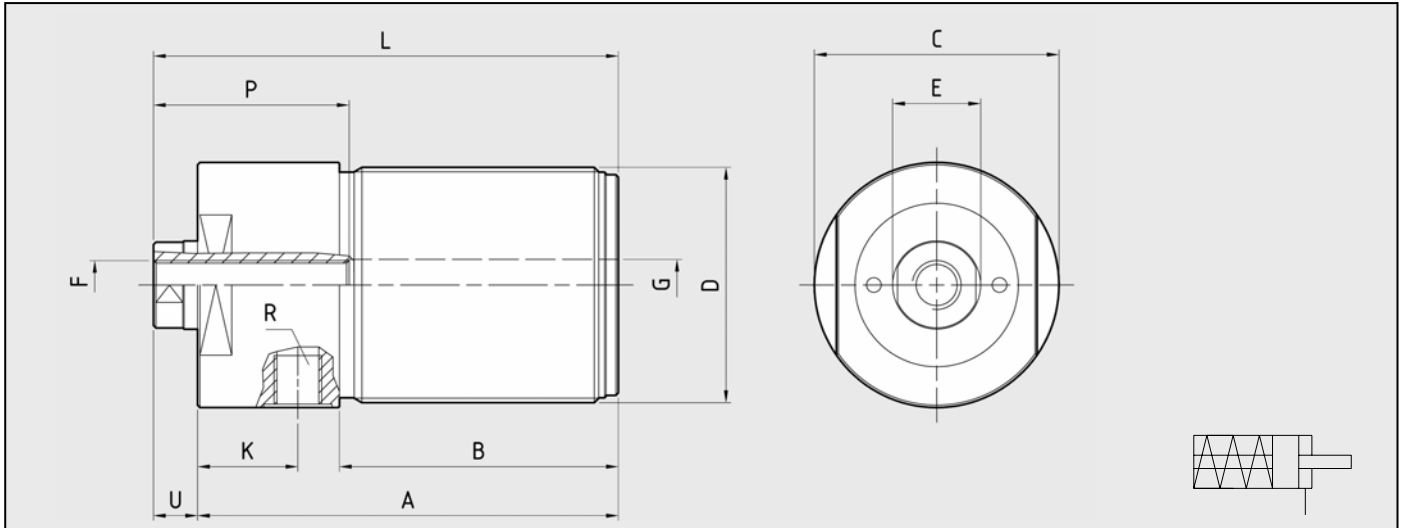
KEY TO CODES

Z52	26	48	37	03
	SERIES	THREADED OUTSIDE DIAMETER	BORE	STROKE (mm)
	26	48	37	03
		60	50	04

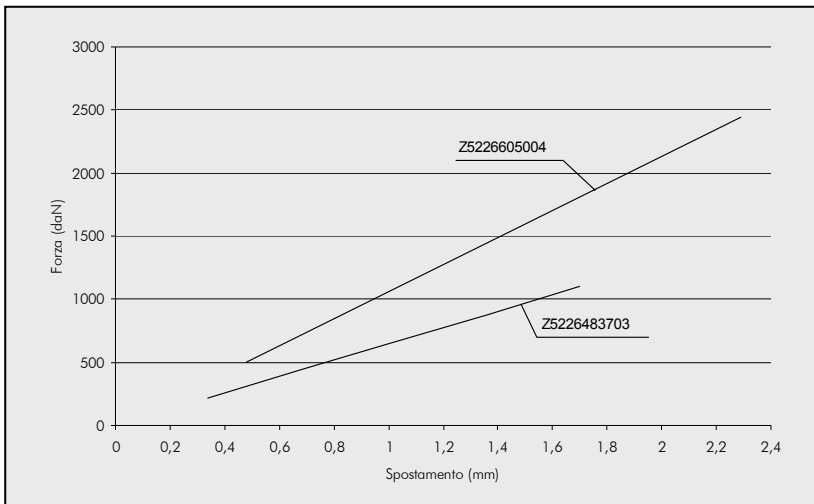
HOLLOW PISTON-ROD CYLINDERS WITH SPRING CLAMPING AND HYDRAULIC RELEASE WITH THREADED THROUGH HOLE SERIES 26



CHARACTERISTICS AND DIMENSIONS



ITEM CODE	FORCE (daN) In proportion to pre-load (mm)	SURFACE AREA (cm ²)	VOLUME (cm ³)	STROKE (mm)	DIMENSIONS (mm)											
					A	B	C	D	E	F	G	P	K	L	U	R (Oil inlet)
Z5226483703	220=0.34 440=0.68 660=1.02 880=1.36 1100=1.70	8.2	2.3	2.7	86	58	50	M48x1.5	18	M10x1.5	10.1	40	19	94	8	1/8G
Z5226605004	490=0.46 980=0.92 1470=1.38 1960=1.84 2450=2.30	14.2	5.3	3.7	120	85	60	M60x2	22	M16x2	16.1			129	9	



FORCE AS A FUNCTION OF THE PISTON ROD POSITION